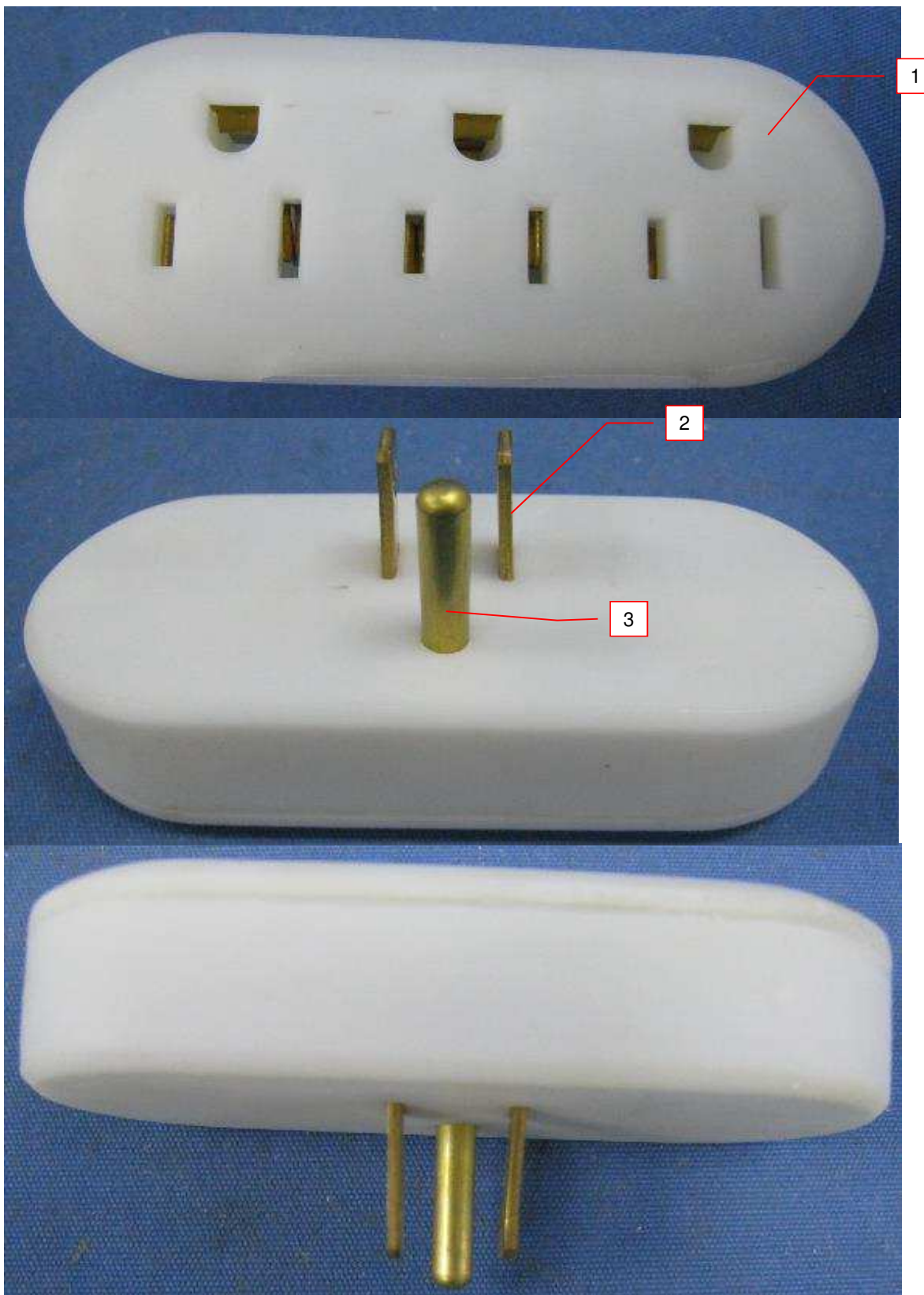


1.0 Reference and Address			
Report Number	180902082SHA-001	Original Issued: 16-Oct-2018	Revised: 25-Feb-2019
Standard(s)	Current Taps And Adapters [UL 498A:2008 Ed.2+R:10Jun2016] General Use Receptacles, Attachment Plugs, And Similar Wiring Devices (R2015) [CSA C22.2#42:2010 Ed.7+U1;U2;U3]		
Entirely Replaces Report Number	SH12100584-001		
Applicant	HANGZHOU KAITE ELECTRICAL APPLIANCE CO.,LTD.	Manufacturer 1	HANGZHOU KAITE ELECTRICAL APPLIANCE CO.,LTD.
Address	SANDU INDUSTRIAL ZONE, JIANDE CITY, ZHEJIANG PROVINCE 311605	Address	SANDU INDUSTRIAL ZONE, JIANDE CITY, ZHEJIANG PROVINCE 311605
Country	China	Country	China
Contact	Mr BaoFengFang	Contact	Mr BaoFengFang
Phone	0571-58317207	Phone	0571-58317207
FAX	-	FAX	-
Email	gma@powerkaite.com	Email	gma@powerkaite.com
Manufacturer 2	Zhejiang Camet Electrical Appliance Co.,Ltd.	Manufacturer 3	Kingtec (vietnam) technologies Co.,Ltd.
Address	Kaihua Industrial Zone, Kaihua, Quzhou, Zhejiang 324300	Address	HAISHAN INDUSTRIAL ZONE, PINGQIAN VILLAGE,HEXIA,DEHE COUNTY, Long An Province
Country	China	Country	Vietnam
Contact	Mr BaoFengFang	Contact	Mr BaoFengFang
Phone	0571-58317207	Phone	0571-58317207
FAX	-	FAX	-
Email	gma@powerkaite.com	Email	gma@powerkaite.com

2.0 Product Description	
Product	Current Taps
Brand name	KAITE,KMC
Description	The products covered by this report are four types current taps, with 5-15P/5-15R configuration,for indoor use only and direct plug in with main supply.
Models	C1306,C2603
Model Similarity	C1306:with one set of 5-15P plug ,with three way 5-15R receptacles; C2603: with two sets of line blade(for plug in duplex receptacle only),with total six outlets(each line blade for 3 outlets, both line blade not electrical connecting)
Ratings	15A 125Vac 1875W 60Hz
Other Ratings	NA

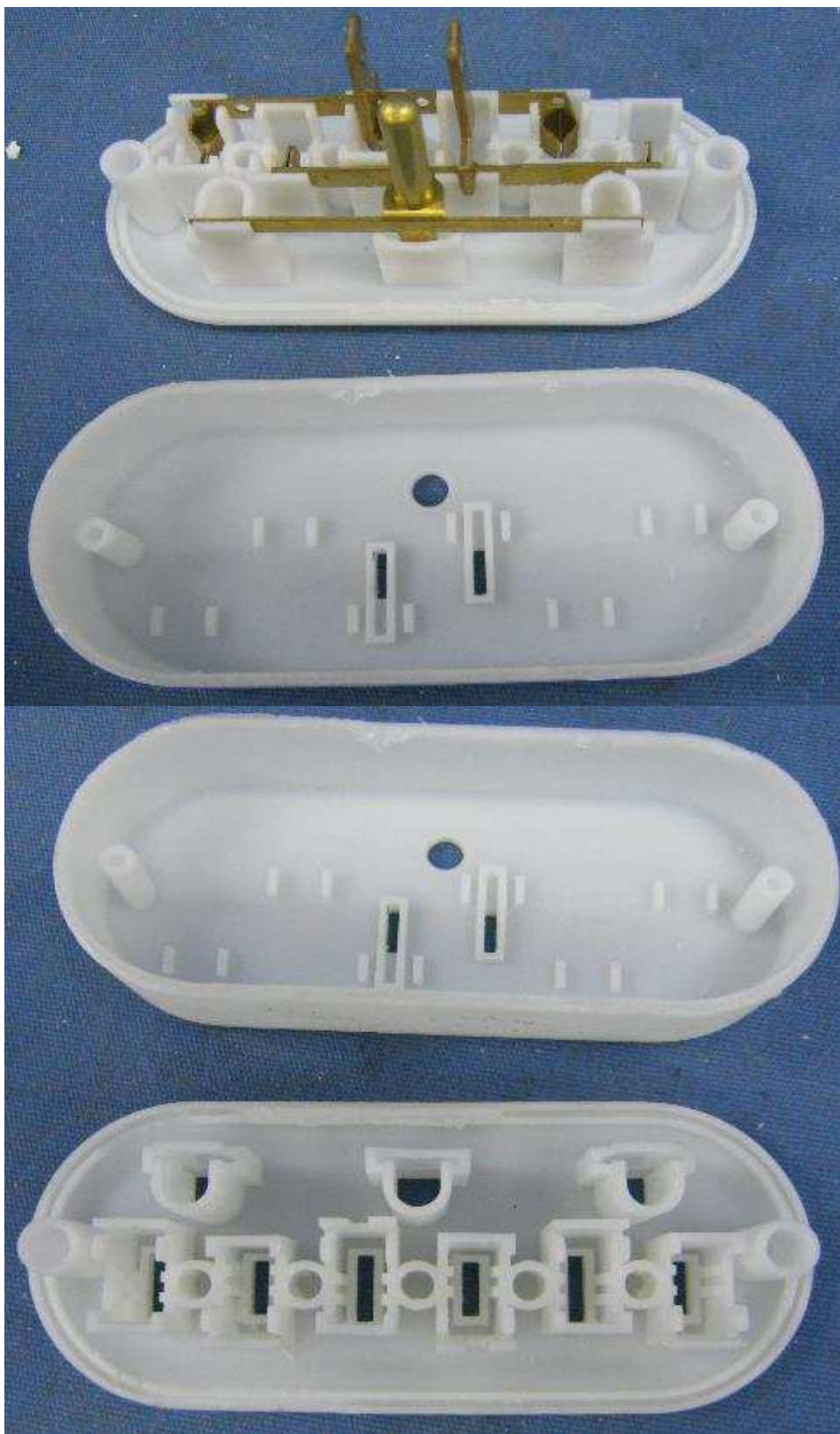
3.0 Product Photographs

Photo 1 - Overall view of C1306



3.0 Product Photographs

Photo 2 - Overall view of C1306



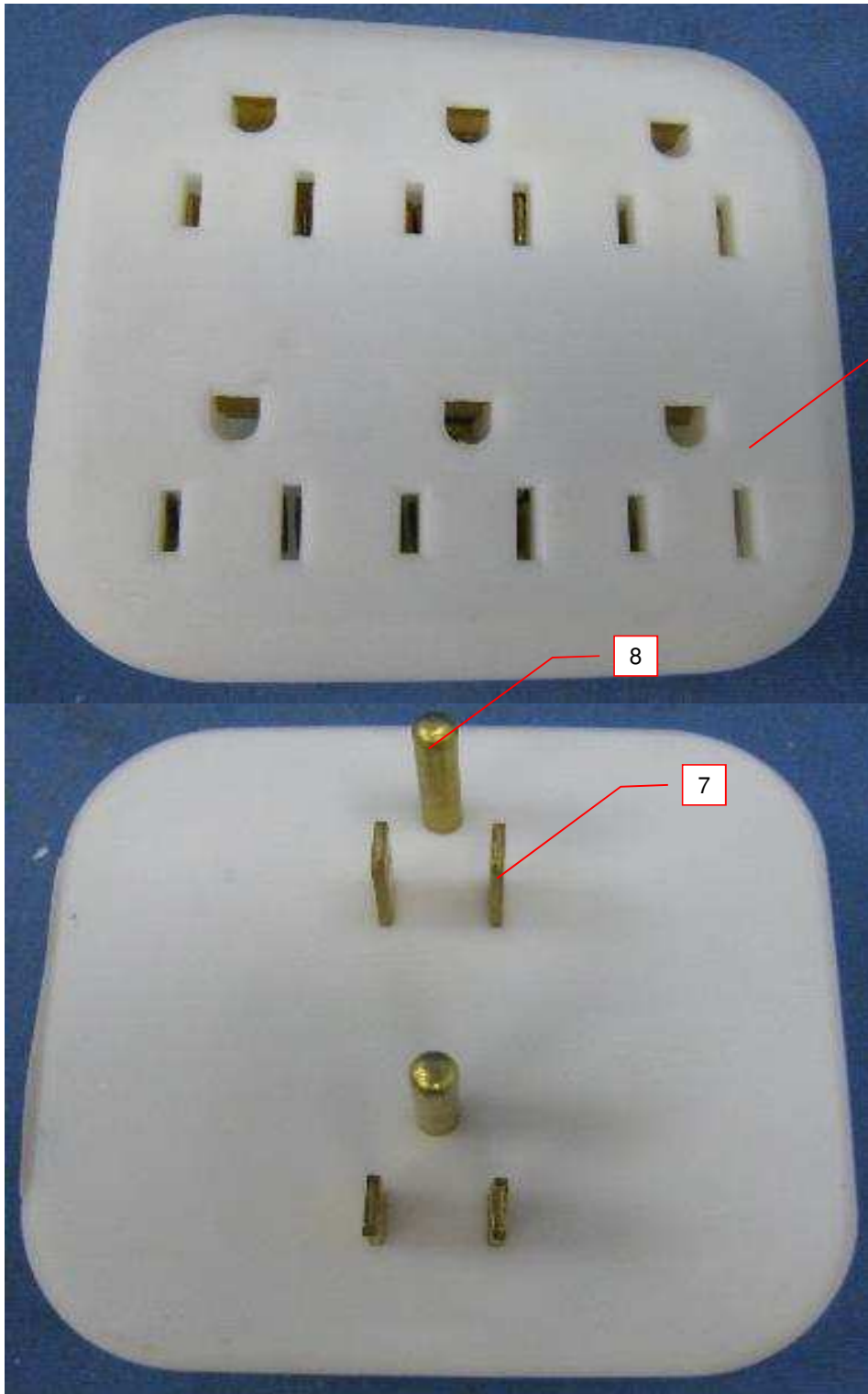
3.0 Product Photographs

Photo 3 - Overall view of C1306



3.0 Product Photographs

Photo 4- Overall view of C2603



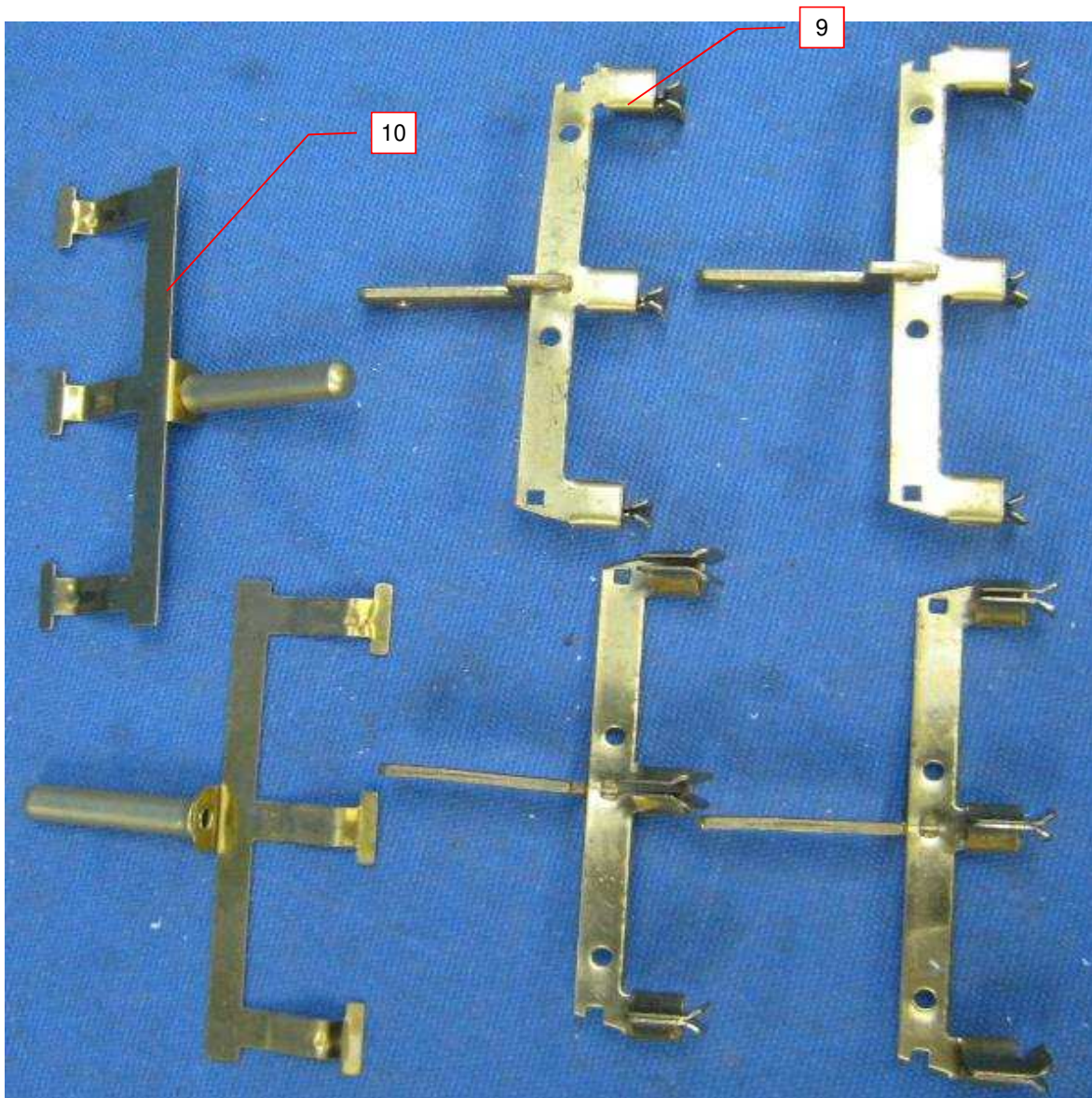
3.0 Product Photographs

Photo 5- Overall view of C2603



3.0 Product Photographs

Photo 6- Inside view of C2603



4.0 Critical Components						
Photo #	Item no. ¹	Name	Manufacturer/ trademark ²	Type / model ²	Technical data and securement means	Mark(s) of conformity ³
1	1	Enclosure	CHI MEI CORPORATION	PA-766	ABS, minimum thickness 1.5mm, flame class V-0, HWI I, HAI 0, RTI 60°C, CTI 2	cURus
1	2	Line and neutral blade	various	H62	Solid construction, with thickness of about 1.5mm,	NR
1	3	Grounding pin	various	H62	Tubular construction, with minimum thickness 0.56mm, connect with internal wire by crimping method	NR
3	4	Line and neutral contact	various	H62	Copper alloy, minimum thickness 0.4mm, connect with internal wire	NR
3	5	Grounding contact	various	H62	Copper alloy, minimum thickness 0.4mm, connect with internal wire	NR
4	6	Enclosure	CHI MEI CORPORATION	PA-766	ABS, minimum thickness 1.5mm, flame class V-0, HWI I, HAI 0, RTI 60°C, CTI 2	cURus
4	7	Line and neutral blade	various	H62	Solid construction, with thickness of about 1.5mm,	NR
4	8	Grounding pin	various	H62	Tubular construction, with minimum thickness 0.56mm, connect with internal wire by crimping method	NR
6	9	Line and neutral contact	various	H62	Copper alloy, minimum thickness 0.4mm, connect with internal wire	NR
6	10	Grounding contact	various	H62	Copper alloy, minimum thickness 0.4mm, connect with internal wire	NR

NOTES:

- 1) Not all item numbers are indicated (called out) in the photos, as their location is obvious.
- 2) "Various" means any type, from any manufacturer that complies with the "Technical data and securement means" and meets the "Mark(s) of conformity" can be used.
- 3) Indicates specific marks to be verified, which assures the agreed level of surveillance for the component. "NR" - indicates Unlisted and only visual examination is necessary. "See 5.0" indicates Unlisted components or assemblies to be evaluated periodically refer to section 5.0 for details.

5.0 Critical Unlisted CEC Components

No Unlisted CEC components are used in this report.

6.0 Critical Features

Recognized Component - A component part, which has been previously evaluated by an accredited certification body with restrictions and must be evaluated as part of the basic product considering the restrictions as specified by the Conditions of Acceptability.

Listed Component - A component part, which has been previously Listed or Certified by an accredited Certification Organization with no restrictions and is used in the intended application within its ratings.

Unlisted Component - A part that has not been previously evaluated to the appropriate designated component standard. It may also be a Listed or Recognized component that is being used outside of its evaluated Listing or component recognition.


Critical Features/Components - An essential part, material, subassembly, system, software, or accessory of a product that has a direct bearing on the product's conformance to applicable requirements of the product standard.

Construction Details - For specific construction details, reference should be made to the photographs and descriptions. All dimensions are approximate unless specified as exact or within a tolerance. In addition to the specific construction details described in this Report, the following general requirements also apply.

1. Spacing - In primary circuits, 1.6 mm minimum spacing are maintained through air and over surfaces of insulating material between current-carrying parts of opposite polarity.
2. Mechanical Assembly - Components such as switches, fuseholders, connectors, wiring terminals and display lamps are mounted and prevented from shifting or rotating by the use of lockwashers, starwashers, or other mounting format that prevents turning of the component.
3. Corrosion Protection - All ferrous metal parts are protected against corrosion by painting, plating or the equivalent.
4. Accessibility of Live Parts - All uninsulated live parts in primary circuitry are housed within a non-metallic enclosure constructed with no openings other than those specifically described in Sections 4 and 5.
5. Grounding - All exposed dead-metal parts and all dead-metal parts within the enclosure that are exposed are connected to the grounding lead of the power supply cord or the equipment grounding terminal.
6. Polarized Connection - This product is provided with a polarized power supply connection. All single pole switches and fuses are connected only to the ungrounded supply circuit conductor.
7. Internal Wiring - N/A
8. Schematics - N/A
9. Markings - See illustration No. 1 for detail marking information.
10. Cautionary Markings - see illustration No. 2 for details.
11. Installation, Operating and Safety Instructions - N/A

7.0 Illustrations

Illustration 1 - Marking

<p>Current tap C1306 15A 125VAC 1875W 60Hz KAITE Date Code:20YY/MM/DD Made In China</p>	 <p>3121738 CONFORMS TO UL STD.498A CERTIFIED TO CSA STD.C22.2#42</p>
---	--

Note:

- 1 For type C2603, all marking is the same as above, only different type designation;
- 2 Date code 20YY/MM/DD only as an example for reference, there can be with other date code identify means for final mass product.;
- 3 There can be with alternative trade mark "KMC"
- 4 There can be with alternative control no 5003846 for manufacturer 2 "Zhejiang Camet Electrical Appliance Co.,Ltd.", it with same marking as above except different control no;
- 5 There can be with alternative control no 5013210 for manufacturer 3 "Kingtec (vietnam) technologies Co.,ltd", it with same marking information as above, except with coutry original information change to be "Made In Vietnma" and different control no;
- 6 For multiple listee 1 "Central Purchasing LLC. DBA Harbor Freight Tools" with multiple listee type 61996 which corresponding to basic listee type C2603. All marking is the same as above, only different multiple listee type designation and different multiple listee trade mark as "HFT", see section 9 for details

7.0 Illustrations

Illustration 2 - Cautionary markings (for basic listee type C2603 and multiple listee type 61996 only)

CAUTION:

TO REDUCE THE RISK OF ELECTRIC SHOCK, USE ONLY INDOORS

It should be plug into a parallel duplex receptacle that is interconnected

Not for use with ground-fault circuit-interrupter receptacles or receptacles with indicator lights or control

To reduce the risk of fire or electric shock, do not use this device with a receptacle in which the slot openings do not align with the blades

ATTENTION

Pour réduire le d'électrocution, Pour Usage À L'Intérieur Seulement.

Il faut le brancher sur une prise double parallèle qui est interconnecté

Ne pas utiliser avec un circuit au sol faute-réceptacles rupteur our réceptacles avec voyants de contrôle ou

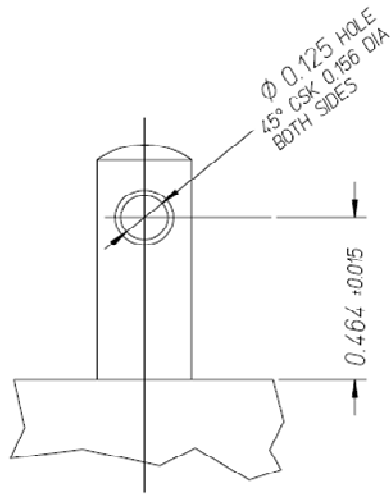
Pour réduire les risques d'incendie ou de choc électrique, ne pas utiliser ce dispositif avec un réceptacle dans lequel les fentes ne sont pas alignées avec les lames

Note:

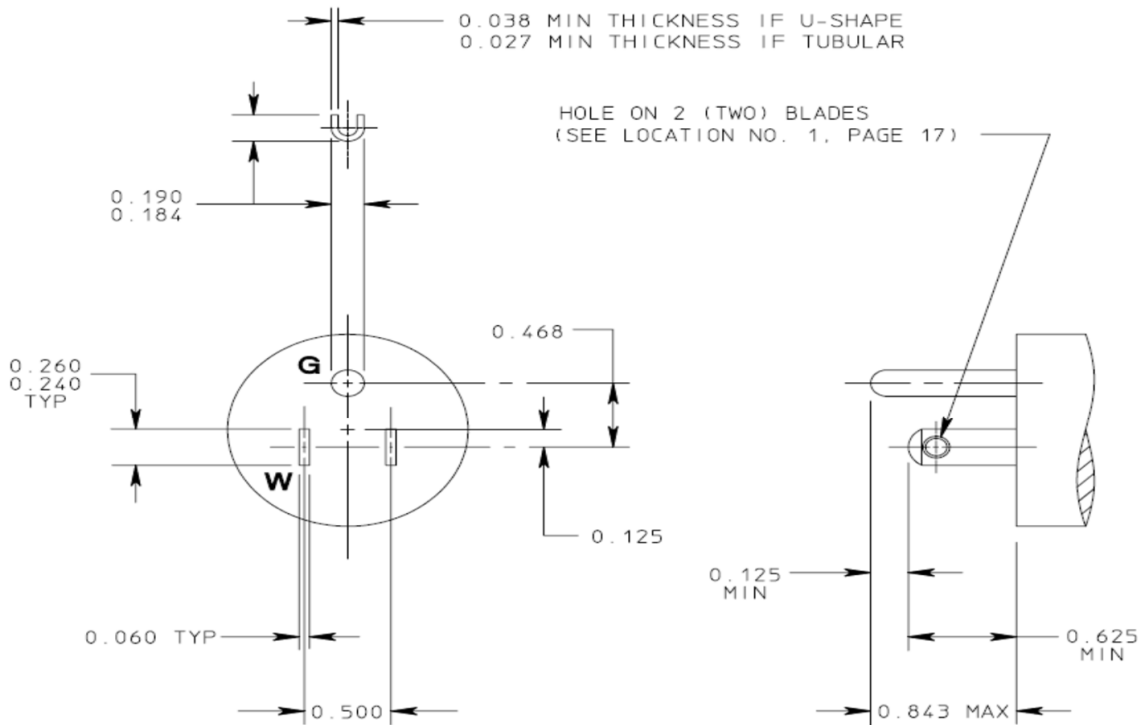
1. All above caution will be marked on product enclosure which be visible after installation or marked on individual package
2. For "CAUTION", it should be not less than 9/64in (3.6mm) high
3. For "REDUCE THE RISK OF ELECTRIC SHOCK, USE ONLY INDOORS", lettering should not be less than 3/32 inch (2.4mm) high

7.0 Illustrations

Illustration 3 - NEMA 5-15P Standard sheet



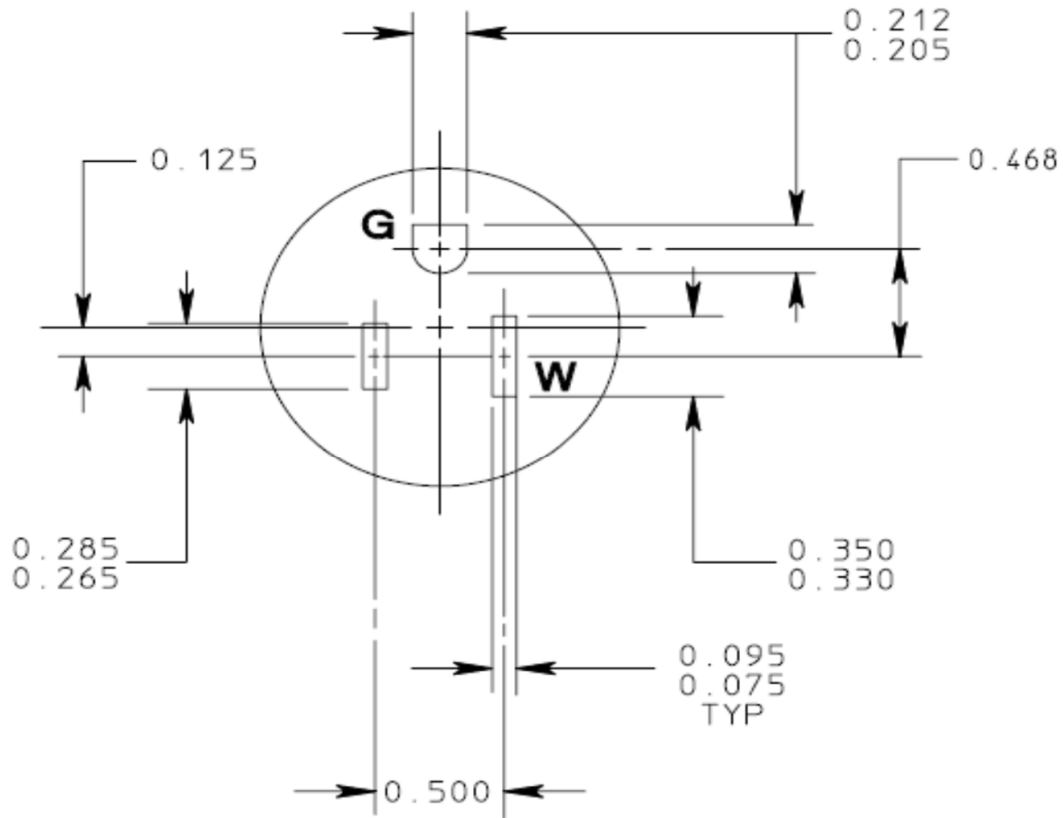
LOCATION # 1



PLUG

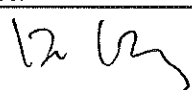
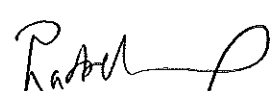
7.0 Illustrations

Illustration 4 - NEMA 5-15R Standard sheet



RECEPTACLE

8.0 Test Summary			
Evaluation Period	2018-09-17~2018-10-16		Project No. 180902082SHA
Sample Rec. Date	17-Sep-2018	Condition	Prototype
Test Location	Building No.86, 1198 Qinzhou Road (North), Shanghai 200233, China		
Test Procedure	Testing Lab		
Determination of the result includes consideration of measurement uncertainty from the test equipment and methods. The product was tested as indicated below with results in conformance to the relevant test criteria.			
Below test conducted.			
Test Description	UL 498A:2008 Ed.2 +R:10Jun2016 Clause	CSA C22.2#42:2010 Ed.7+U1;U2;U3 Clause	
Dielectric Voltage Withstand	24	8.21	
Mold Stress Relief	22	-	
Moisture Absorption Resistance Test	23	-	
Dielectric Voltage Withstand (Repeated)	24	8.21	
Insulation Resistance	26	8.5	
Security of Blades	27	8.2	
Contact Security Test	28	-	
Retention of Plugs	29	8.7	
Overload Test	30	8.8	
Temperature Rise	31	8.9	
Retention of plugs Test (Repeated)	32	8.10	
Resistance to arcing test	33	8.17	
Improper Insertion Test	35	-	
Single-Pole Insertion Test	35A	-	
Grounding Contact	36	8.16	
Obstruction Test	38	-	
Evaluation Period	2019-02-22~2019-02-25		Project No. 190200859SHA
Sample Rec. Date	NA	Condition	Prototype
Test Location	Building No.86, 1198 Qinzhou Road (North), Shanghai 200233, China		
Test Procedure	Testing Lab		
Determination of the result includes consideration of measurement uncertainty from the test equipment and methods. The product was tested as indicated below with results in conformance to the relevant test criteria.			
All is the same as before, only add manufacturer 3 "Kingtec (vietnam) technologies Co.,Ltd." and multiple listee 1 "Central Purchasing LLC, DBA Harbor Freight Tools", after review, no additional test required.			

8.1 Signatures			
A representative sample of the product covered by this report has been evaluated and found to comply with the applicable requirements of the standards indicated in Section 1.0.			
Completed by:	Da Deng	Reviewed by:	Rachel Wang
Title:	Engineer	Title:	Reviewer
Signature:		Signature:	

9.0 Correlation Page For Multiple Listings

The following products, which are identical to those identified in this report except for model number and Listee name, are authorized to bear the ETL label under provisions of the Intertek Multiple Listing Program.

BASIC LISTEE	HANGZHOU KAITE ELECTRICAL APPLIANCE CO.,LTD.
Address	SANDU INDUSTRIAL ZONE, JIANDE CITY, ZHEJIANG PROVINCE 311605
Country	China
Product	Current Taps

MULTIPLE LISTEE 1	Central Purchasing LLC, DBA Harbor Freight Tools
Address	26541 Agoura Rd., Calabasas, CA91302
Country	USA
Brand Name	HFT

ASSOCIATED MANUFACTURER	HANGZHOU KAITE ELECTRICAL APPLIANCE CO.,LTD.
Address	SANDU INDUSTRIAL ZONE, JIANDE CITY, ZHEJIANG PROVINCE 311605
Country	China

MULTIPLE LISTEE 1 MODELS	BASIC LISTEE MODELS
61996	C2603

MULTIPLE LISTEE 2	None
Address	
Country	
Brand Name	

ASSOCIATED MANUFACTURER	
Address	
Country	

MULTIPLE LISTEE 2 MODELS	BASIC LISTEE MODELS

MULTIPLE LISTEE 3	None
Address	
Country	
Brand Name	

ASSOCIATED MANUFACTURER	
Address	
Country	

MULTIPLE LISTEE 3 MODELS	BASIC LISTEE MODELS

10.0 General Information

The Applicant and Manufacturer have agreed to produce, test and label ETL Listed products in accordance with the requirements of this Report. The Manufacturer has also agreed to notify Intertek and to request authorization prior to using alternate parts, components or materials.

COMPONENTS

Components used shall be those itemized in this Intertek report covering the product, including any amendments and/or revisions.

LISTING MARK

The ETL Listing mark applied to the products shall either be separable in form, such as labels purchased from Intertek, or on a product nameplate or other media only as specifically authorized by Intertek. Use of the mark is subject to the control of Intertek.

The mark must include the following four items:

- 1) applicable country identifiers "US" and/or "C" or "US", "C" and "EU"
- 2) the word "Listed" or "Classified" or "Recognized Component" (whichever is appropriate)
- 3) a control number issue by Intertek
- 4) a product descriptor that identifies the standards used for certification. Example:

For US standards, the words, "Conforms to" shall appear with the standard number along with the word, "Standard" or "Std." Example: "Conforms to ANSI/UL Std. XX."

For Canadian standards, the words "Certified to CAN/CSA Standard CXX No. XX." shall be used, or abbreviated, "Cert. to CAN/CSA Std. CXX No. XX."

Can be used together when both standards are used.

Note: A facsimile must be submitted to Intertek, Attn: Follow-up Services for approval prior to use.

The facsimile need not have a control number. A control number will be issued **after signed Certification**

Agreements have been received by the Follow-up Services office, approval of the facsimile of your proposed Listing Mark, satisfactory completion of the Listing Report, and scheduling of a factory assessment in your facility.

MANUFACTURING AND PRODUCTION TESTS

Manufacturing and Production Tests shall be performed as required in this Report.

FOLLOW-UP SERVICE

Periodic unannounced audits of the manufacturing facility (and any locations authorized to apply the mark) shall be scheduled by Intertek. An audit report shall be issued after each visit. Special attention will be given to the following:

1. Conformance of the manufactured product to the descriptions in this Report.
2. Conformance of the use of the ETL mark with the requirements of this Report and the Certification Agreement.
3. Manufacturing changes.
4. Performance of specified Manufacturing and Production Tests.

In the event that the Intertek representative identifies non-conformance(s) to any provision of this Report, the Applicant shall take one or more of the following actions:

1. Correct the non-conformance.
2. Remove the ETL Mark from non-conforming product.
3. Contact the issuing product safety evaluation center for instructions.

10.1 Evaluation of Unlisted Components

Because Unlisted Components are uncontrolled, and they do not fall under a third party follow up program, Intertek may require these components to be tested and/or evaluated at least once annually, more often for certain components, as part of the independent certification process. The Unlisted Components in Section 5.0 require testing and/or evaluation as indicated.

Note to Intertek Follow Up Inspector: The Component Evaluation Center, CEC, will notify you in writing when these components must be selected and sent to the CEC for re-evaluation

Ship the samples to:
Intertek Testing Services Shanghai
ETL Component Evaluation Center
Building No. 86, 1198 Qinzhou Road (North)
Shanghai 200233, China
Attn: Ms. Angela Han

Sample Disposition: Due to the destructive nature of the testing, all samples will be discarded at the conclusion of testing unless, the manufacturer specifically requests the return of the samples. The request for return must accompany the initial component shipment.

11.0 Manufacturing and Production Tests

The manufacturer agrees to conduct the following Manufacturing and Production Tests as specified:

Required Tests

Dielectric Voltage Withstand Test, Grounding Continuity Test

11.1 Dielectric Voltage Withstand Test

Method

One hundred percent of production of the products covered by this Report shall be subjected to a routine production line dielectric withstand test.

The test shall be conducted on products, which are fully assembled. Prior to applying the test potential, all switches, contactors, relays, etc., should be closed so that all primary circuits are energized by the test potential. If all primary circuits cannot be tested at one time, then separate applications of the test potential shall be made.

The test voltage specified below shall be applied between primary circuits and accessible dead-metal parts. The test voltage may be gradually increased to the specified value but must be maintained at the specified value for one second or one minute as required.

Test Equipment

The test equipment shall incorporate a transformer with an essentially sinusoidal output, a means to indicate the applied test potential, and an audible and/or visual indicator of dielectric breakdown.

The test equipment shall incorporate a voltmeter in the output circuit to indicate directly the applied test potential if the rated output of the test equipment is less than 500VA.

If the rated output of the test equipment is 500VA or more, the applied test potential may be indicated by either:

- 1 - a voltmeter in the primary circuit;
- 2 - a selector switch marked to indicate the test potential; or
- 3 - a marking in a readily visible location to indicate the test potential for test equipment having a single test potential output.

In cases 2 and 3, the test equipment shall include a lamp or other visual means to indicate that the test potential is present at the test equipment output. All test equipment shall be maintained in current calibration.

Products Requiring Dielectric Voltage Withstand Test:

<u>Product</u>	<u>Test Voltage</u>	<u>Test Time</u>
All products covered by this Report.	1250V or 1500V	60 s 1 s

11.2 Grounding Continuity Test

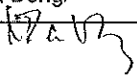
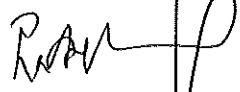
Method

Each product listed below shall be subjected to a test to determine that there is continuity between accessible dead-metal parts of the product and the grounding pin or blade of the attachment plug.

If all accessible dead metal is connected, only a single test need be performed. A visual or audible device (ohmmeter, buzzer, etc.) may be used to indicate grounding continuity.

Products Requiring Grounding Continuity Test:

All products covered by this Report.

12.0 Revision Summary				
The following changes are in compliance with the declaration of Section 8.1:				
Date/ Proj # Site ID	Project Handler/ Reviewer	Section	Item	Description of Change
25-Feb-2019	Da Deng/ 	1	3	Add manufacturer 3 "Kingtec (vietnam) technologies Co.,Ltd."
190200859S HA	Rachel Wang 	7	1	1 Delete marking label for original control no 5003846; 2 Add note 4 for control no information 5003846 for manufacturer 2 "Zhejiang Camet Electrical Appliance Co.,Ltd."; 3 Add note 5 for control no information for new added manufacturer 3 "Kingtec (vietnam) technologies Co.,Ltd." 4 Add note 6 for new added multiple listee 1 "Central Purchasing LLC, DBA Harbor Freight Tools" which with multiple listee model 61996 according to basic model C2603; 5 Renumbering item number for note
		7	2	Add caution inform for new added multiple listee type 61996
		8	-	Add test summary information
		9	1	Add multiple listee 1 "Central Purchasing LLC, DBA Harbor Freight Tools"
		12	-	Add revision summary information